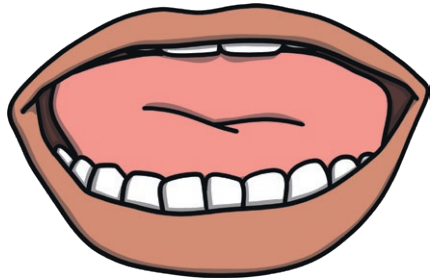


long a



a ai ay a_e



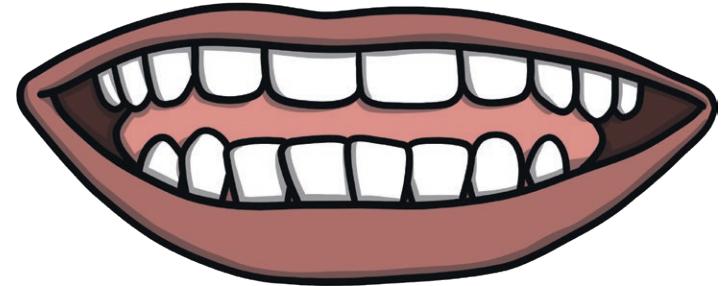
ey eigh



Mouth open. Chin drops. Lips pulled apart.
Voice on.



long e



e ee e_e y



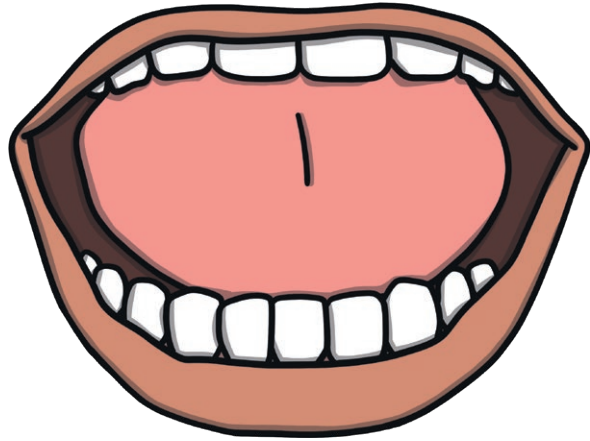
ea ie ey



Mouth smiles. Lips spread. Tongue raised
towards top of mouth. Voice on.



long i



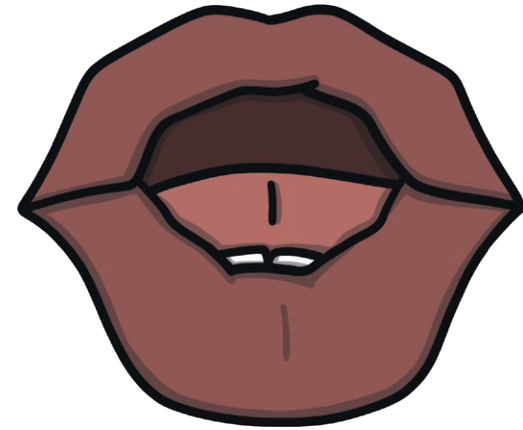
i igh ie i_e y



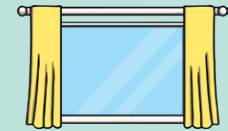
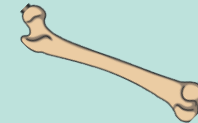
Mouth open wide. Tongue down.
Long, moving sound. Voice on.



long o



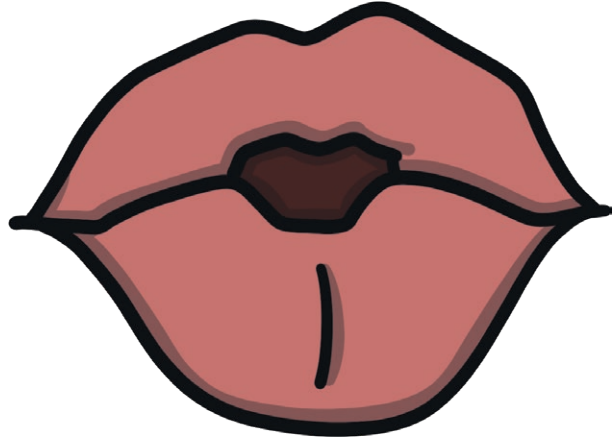
o oa o_e ow oe



Mouth is open, lips in oval shape.
Long, moving sound. Voice on.



long u



u



u_e



ue



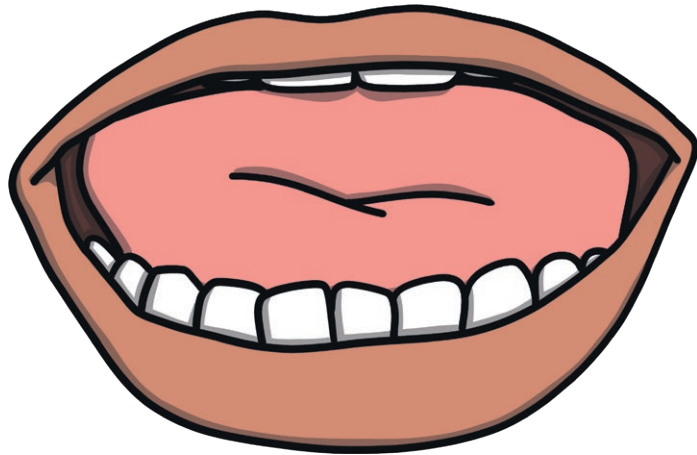
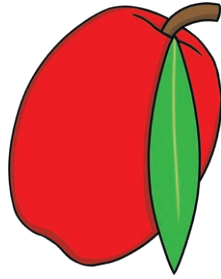
ew



Lips rounded and slightly open. Back of tongue high. A long sound. Voice on.



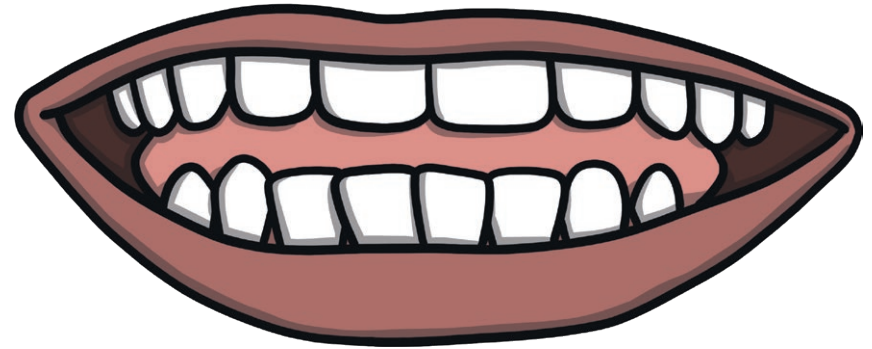
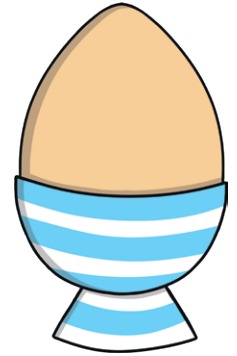
a



Mouth open. Chin drops. Teeth apart. Tongue pressing gently against the inside lower mouth.
Quick Sound. Voice on.

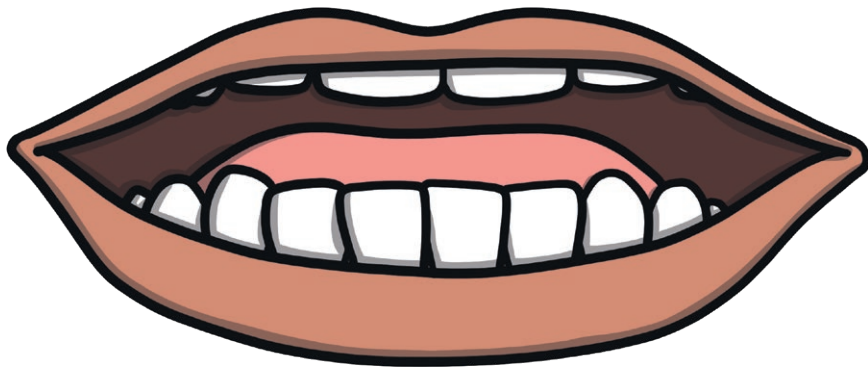


e

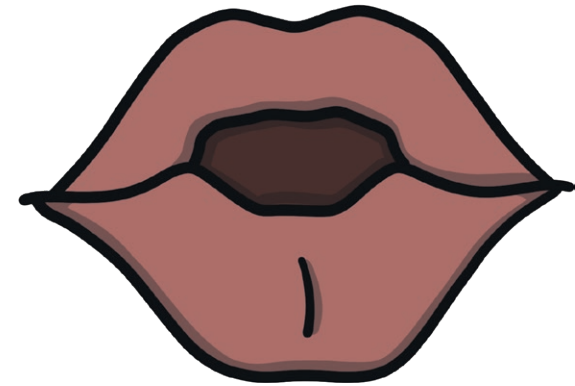
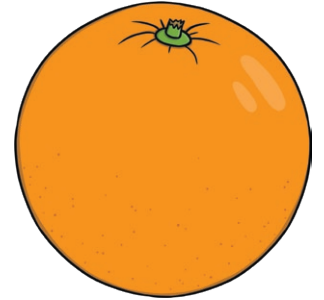
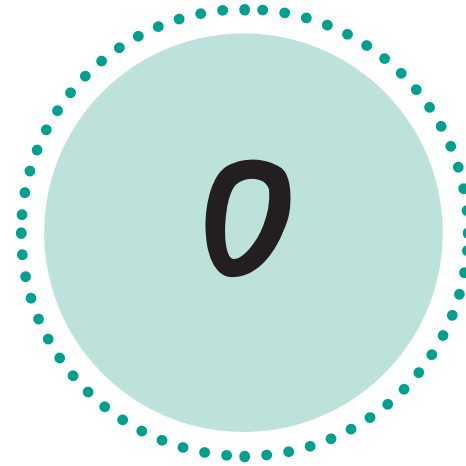


Mouth smiles. Lips stretched out.
Quick Sound. Voice on.



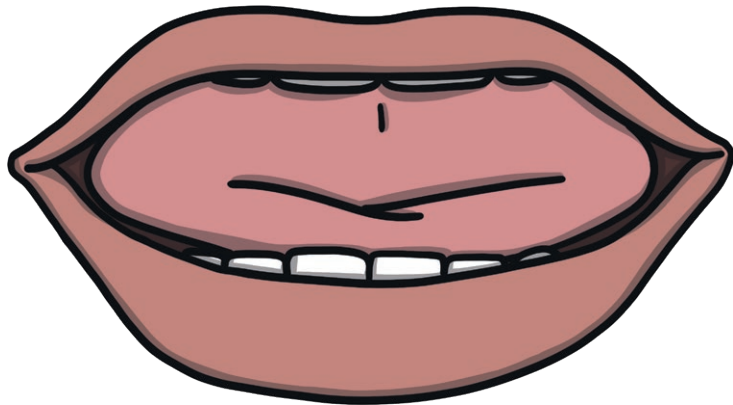


Make a little smile. Tongue is high.
Quick Sound. Voice on.



Mouth soft and open wide.
Tongue is at the back.
Quick Sound. Voice on.





Mouth soft and open wide. Tongue is central.
Quick Sound. Voice on.

